

Run Pudsey is a huge success again



£2,812.20

RAISED SO FAR

134

PARTICIPANTS

This year's 'Run Pudsey' 25 min run / walk around the school grounds was a huge success and to date has raised £2812.20. A huge thankyou to all those who officially entered and made an online donation. We will be sent the correct number of medals within the next few weeks and will give them out in school. It is not too late to retrospectively enter and make a donation. Please follow this link <https://www.runpudsey.co.uk/school/st-brides-c-i-w-primary-school> and enter the secret school code **CF01** .

Christmas Concert Dates



The Christmas Concert Dates and all other key dates are found on the parent calendar on the school website.

They are ~

Nursery & Reception Nativity – Friday 12th December 9:30am

Year 1 - 3 Nativity– Tuesday 9th December 6pm & Wednesday 10th December 2pm and 6pm.

Year 4 - 6 Christmas Concert - Tuesday 16th December 6pm & Wednesday 17th December 2pm and 6pm.

All performances will be held in the school hall.

Christmas Concert Ticket Arrangements

Today you will have received a letter explaining the Christmas concert ticket arrangements. Tickets will be available next week Monday - Friday. In the first instance you are entitled to a maximum of two tickets. There is no need to queue at the school office on Monday, please just return the slip with £2.50 per ticket and we'll send the tickets home with your children. From Monday 24th November the remaining tickets will go on sale first come first served (max 4 more). The new school hall is significantly bigger than the old one and I'm confident we have the capacity to keep everyone happy.

Advanced Notice to start collecting your Jam jars!

CHRISTMAS JINGLE JARS are back!



FROM THIS

...



TO THIS!

It has become a lovely tradition over the past few years for the children to decorate and fill jingle jars for us to sell at our Christmas fair.

Please bring your completed jars into school on or before
Thursday 20th November ready to sell at our Fair.

Please try your best to donate a jar as the more we have, the more children can take one home.

If you can make more than one jar, then that would be amazing!
There is plenty of inspiration on Pinterest for the less crafty among us.

***NO unwrapped sweets/food items for hygiene reasons and
NO ifs, NO buts, strictly NO NUTS please***

Please **TAKE CARE** when bringing glass items into school.



CHRISTMAS RAFFLE HAMPERS

It's that time of year again and we at the FOSB are gearing up for our Christmas Fundraising. Once again we are asking for your support to help us raise as much money as we can for our fantastic school. As it was so well received last year, we have decided to create the **8 Colourful Christmas Hampers** for our Raffle prizes and would love you to support us again as you did so fabulously last year. Each year group in school will be given a class colour and we are asking that you send in donations of items in that colour for the Christmas hamper. So, for example, if your class colour is **Red** you might send in a box of Maltesers, a bottle of red wine or a tube of ready salted Pringles. If your class colour is **Yellow/Gold** you might send in some Ferrero Roche, Starburst sweets or some Gold Blend Coffee.... the choice is yours! As long as they are the colour your child's class has been allocated and would be something you would be happy to win in a hamper!

NURSERY - red

RECEPTION - orange

YEAR 1 - yellow/gold

YEAR 2 - green

YEAR 3 - blue

YEAR 4 - pink

YEAR 5 - silver/white

YEAR 6 - purple



We have always been extremely well supported by our amazing local business owners in the past and would love it if our hampers had some extra special prizes within them. If you are a local business that could donate this year, then please send in your donation to your child's class in an envelope with detail of what the prize is written on the outside please. It would be very much appreciated and well received. Can all coloured hamper donations be sent into class **by Wednesday 19th November** please as we'd like to have them ready and on display in the Christmas fayre.

Many Thanks in advance, The Friends of St Brides

Putt The Present • Elf Yourself & Glitter Tattoos • Lollypop Hoopla

Sock It Santa • Raffle • Bauble Fruit Machine

Join Us For Our



Christmas Fayre

**Spread holiday cheer
and make a difference
for our school community!**

FRIDAY 21ST NOV 3:30 PM

HOW CAN YOU HELP?

- **DONATIONS OF CAKES & BOOKS BY WED 19/11/25 (Book donation box is in reception)**
- **JINGLE JARS BY THURS 20/11/25 (To Mrs Willows/ Class Teacher)**
- **VOLUNTEERS NEEDED**

Rainbow Raffle to be drawn on Mon 15/12/25

Organised by FOSB

• Pre-loved Uniform & Book Stalls • Jingle Jars

• Splat-The-Rat • Cakes & Hot Drinks • Craft Stalls



St Bridget's Church

AUTUMN

FAYRE



Saturday November 15th 12 noon till 3pm

St Brides Major Church Hall

CAKES **CRAFT STALLS** **CHILDREN'S CRAFTS**
REFRESHMENTS **RAFFLE** **BOTTLES**

This is a cash only event

If you would like to hire a table please contact

Joy Newton on 07977701713

A good chance to sort out those toy cupboards before
the Christmas season!

Table hire £10—or share with a friend.



Thank you!

St Brides C.I.W. Primary School

Your incredible donation totalled 50 kg! This will provide food parcels to 15 people in crisis.

You are what keeps this charity and its vital work going and for that we are eternally grateful.

Angela Rackham
Trustee

Registered charity number 1142714
Registered in England and Wales.
November 2025

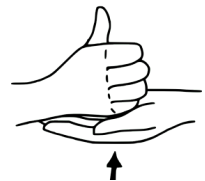
Welsh Phrase of the Week

**Plant Mewn Angen
Children in Need**

Makaton

**Phrase of the
Week**

help



Admissions for Reception Class 2026

This year the local authority will again be handling our admissions for the Reception Class intake September 2026. Parents need to apply for a place via the Vale of Glamorgan Council Website (linked below) between 28th November and 23rd January. The Local Authority will then work with the school's Governing Body to allocate places according to the school's admission criteria. Offers of places will be made on April `16th. It is really important that you complete the online application form within the given time period. Paper copies are available from the school office.

<https://www.valeofglamorgan.gov.uk/en/living/schools/admissions/primary/Primary-School-Admissions.aspx>