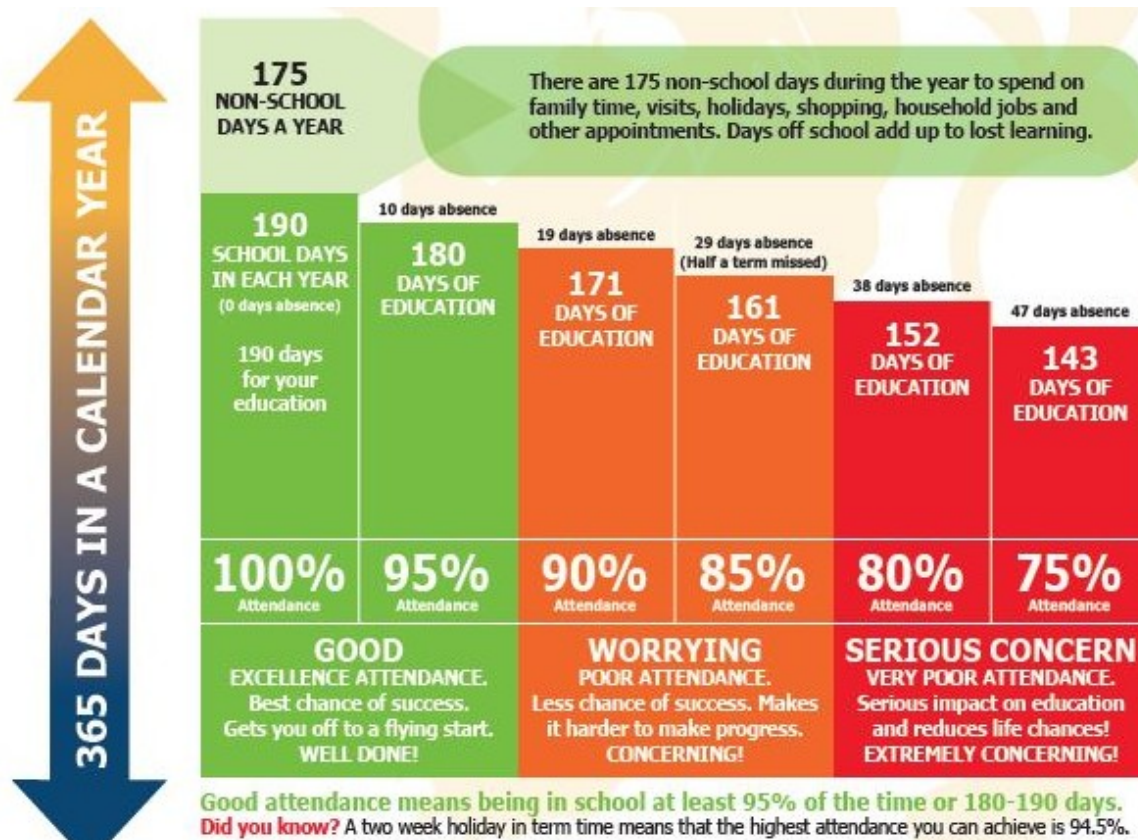


### What was your child's attendance figure for the Autumn Term?

A few days before the end of the Term you should have received a letter about your child's attendance, the letter also highlights the importance of school attendance and our joint commitment to pupils.

I would like to ask you to set the highest of expectations for your child's attendance. A parent/carer has a huge impact on their child's view of school and the importance of good attendance.

When pupils attend school regularly, they are more likely to make friends, enjoy their learning, achieve better results, and increase their life chances. This is something I want for your child. As a result, **our attendance target for all children is a minimum of 97% for the year.** We understand there can be genuine reasons for absence during the school year, and this target allows for that. We will write to you termly with your child's attendance to keep you informed. We wish to provide your child with the very best opportunities to succeed and look forward to working with you and your child this year.



### Holidays in term time

Holidays in term time will not be authorised in St Brides and may result in a referral to the Education Welfare Officer and a Fixed Penalty Notice. We arrange our INSET training all in one week to help St Brides families arrange cheaper holidays. Parents are legally responsible for ensuring their children receive an education. Those who intend to take their children out of school need to notify the school via the request form on the school website.



UK Health  
Security  
Agency



# Should I keep my child off school?

## Yes

### Until...

Chickenpox	at least 5 days from the onset of the rash and until all blisters have crusted over
Diarrhoea and Vomiting	48 hours after their last episode
Cold and Flu-like illness (including COVID-19)	they no longer have a high temperature and feel well enough to attend. Follow the national guidance if they've tested positive for COVID-19.
Impetigo	their sores have crusted and healed, or 48 hours after they started antibiotics
Measles	4 days after the rash first appeared
Mumps	5 days after the swelling started
Scabies	they've had their first treatment
Scarlet Fever	24 hours after they started taking antibiotics
Whooping Cough	48 hours after they started taking antibiotics

## No

but make sure you let their school or nursery know about...

Hand, foot and mouth	Glandular fever
Head lice	Tonsillitis
Threadworms	Slapped cheek



SCAN ME

### Advice and guidance

To find out more, search for health protection in schools or scan the QR code or visit <https://qrco.de/minfec>.

© Crown copyright 2022. Product code: MSC21EH. 5x A4 PL. 2022. MPS. Gateway number: 20211451

## Curriculum News

At the start of each term, each class teacher issues a termly Curriculum Newsletter to parents / carers detailing the topics to be covered for that term, useful information and important dates. These are now available on the pages section of the school website <https://www.stbridesprimary.org.uk/class-pages/> If you would like a paper copy they are available from the school office.



# Take part in a new study about child development in Wales

## Who can take part?

Parents and carers of children aged 9-11 years (Years 5 & 6) in a primary school in Wales.

## Why take part?

- This research study is about children's abilities to regulate their attention, behaviours and emotions.
- Taking part will help us to better understand children's challenges related to ADHD.
- This will help children with ADHD (particularly girls, who are often missed) get timely support.

## What taking part involves?

- Complete an assessment pack that includes questions about your child's development
- Enter a prize draw for a gift voucher.
- To find out more about what taking part involves, please visit our website.

## How to take part



To take part: scan this QR code or visit [bit.ly/ADHDbears](https://bit.ly/ADHDbears)

For more information, please contact  
**Dr Joanna Martin:**  
[martinjm1@cardiff.ac.uk](mailto:martinjm1@cardiff.ac.uk)

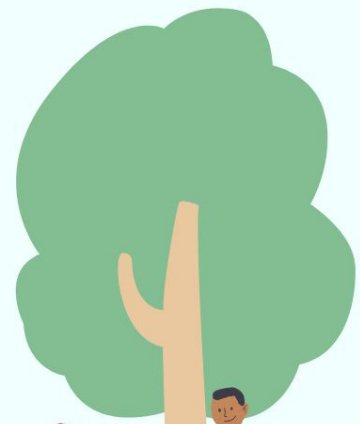
**Wolfson Centre**  
for Young People's Mental Health  
**Canolfan Wolfson**  
ar gyfer lechyd Meddwl Pobl Ifanc

**NCMH**  
National Centre for Mental Health  
Canolfan Iechyd Meddwl Genedlaethol

**Ymchwil Iechyd a Gofal Cymru**  
Health and Care Research Wales



**CARDIFF UNIVERSITY**  
**PRIFYSGOL CAERDYB**



# Admissions for Reception Class 2026

This year the local authority will again be handling our admissions for the Reception Class intake September 2026. Parents need to apply for a place via the Vale of Glamorgan Council Website (linked below) between 28<sup>th</sup> November and 23<sup>rd</sup> January. The Local Authority will then work with the school's Governing Body to allocate places according to the school's admission criteria. Offers of places will be made on April 16<sup>th</sup>. It is really important that you complete the online application form within the given time period. Paper copies are available from the school office.

<https://www.valeofglamorgan.gov.uk/en/living/schools/admissions/primary/Primary-School-Admissions.aspx>

## After School Clubs

The after school clubs run by the school staff will start on Monday 19<sup>th</sup> January and will run until Friday 27<sup>th</sup> March. More information about the clubs and how to book will be provided on a separate letter on Monday.

## Snow

If the school needs to be closed due to heavy snowfall then parents will be notified as early as possible. The school will use

Parent Pay - School Website – Twitter - Local Authority Website - Local Media to spread the news.



## Makaton Phrase of the Week



happy new year!

## Welsh Phrase of the Week

Blwyddyn Newydd Dda

Happy New Year

## School Year 2025 / 2026

Term	Begin	Half Term		End
		Begin	End	
Autumn 2025	Monday 1 <sup>st</sup> September	Monday 27 <sup>th</sup> October	Friday 31 <sup>st</sup> October	Friday 19 <sup>th</sup> December
Spring 2026	Monday 5 <sup>th</sup> January	Monday 16 <sup>th</sup> February	Friday 20 <sup>th</sup> February	Friday 27 <sup>th</sup> March
Summer 2026	Monday 13 <sup>th</sup> April	Monday 25 <sup>th</sup> May	Friday 29 <sup>th</sup> May	Monday 20 <sup>th</sup> July

INSET Days will be taken between 1<sup>st</sup>– 5<sup>th</sup> June and on Monday 20<sup>th</sup> July 2026.

*Mr Mottram*